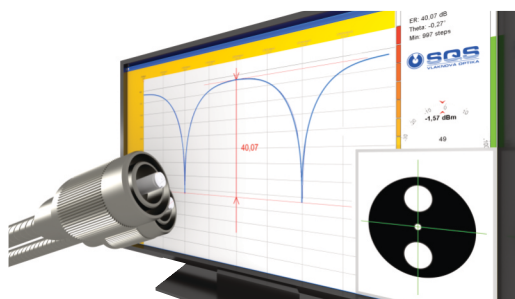




High ER Polarization Maintaining Patchcords

in wavelength range from 405 to 1620 nm



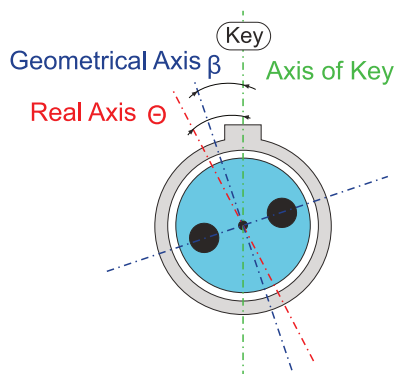
- High value of PER (up to 35dB @ 1550nm)
- Active fiber alignment to connector's key
- Precise optical lengths of patchcords
- Expanding core diameter at the end of fiber
- PM patchcords with MPO or Fiber Array on request
- End face antireflection coating on request

SQS Vláknová optika a.s. is producer of high quality polarization maintaining patchcords with high extinction ratio (PER) within wavelength range from 405 up to 1620nm. Higher values of ER is achieved because of sophisticated process of active PM fiber alignment inside of connector and unique method of bonding PM fiber to the ferrule with minimal additional stress induced by adhesive. Active alignment method allow us to guarantee minimal angle misalignment between axis of connector's key and real axis of PM fiber. FO components meet IEC standards.

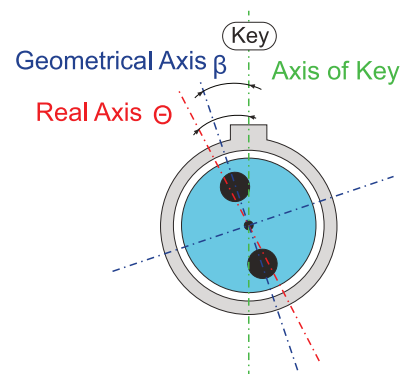
PM Connectors

Design Type :	405	460	630	780	980	1310	1550
Wavelength Range [nm] :	400 - 680	460 - 630	630 - 780	780 - 980	980 - 1300	1280 - 1340	1490 - 1620
Insertion Loss IL (max) [dB] :	1.8	1.5	1.2	0.8	0.6	0.5	0.4
Insertion Loss IL (typ) [dB] :	1.5	1.2	0.9	0.5	0.4	0.3	0.2
Extinction Ratio (min) [dB] :	20	20, 25	20, 25	20, 25	20, 25	20, 25, 30	20, 25, 30
Core/Cladding Size :	3/125	3/125	4/125	5/125	6/125	9/125	10/125
Return Loss RL (UPC ver.) [dB] :	> 50 (typical 55)						
Return Loss RL (APC ver.) [dB] :	> 60 (typical 68)						
Angle Misalignment β (GEO axis) [°]	± 0.5						
Angle Misalignment Θ (Real axis) [°]	± 2.5 or ± 1.5						
Repeatability (500 matings) :	± 0.2						
Connector type :	FC, SC, MU, LC						
Operating Temperature [°C] :	- 20 to 70						
Storage Temperature [°C] :	- 40 to 80						

Aligned to Fast Axis



Aligned to Slow Axis

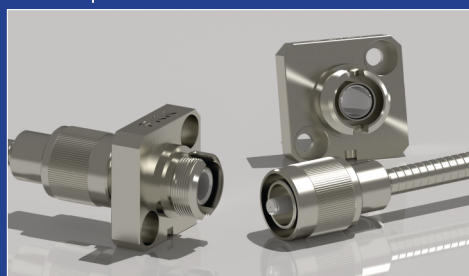


Angle misalignment Θ inform us how precisely is connector assembled on PM fiber. It means what is maximum angle between real axis of glued fiber and axis of connector's key. Angle misalignment affects total PER during mating two PM connectors.

SQS FKK PM Adapter



FKK Adapter with Armored PM FC Patchcord



FC with Buffered Fiber or Loose Tube

